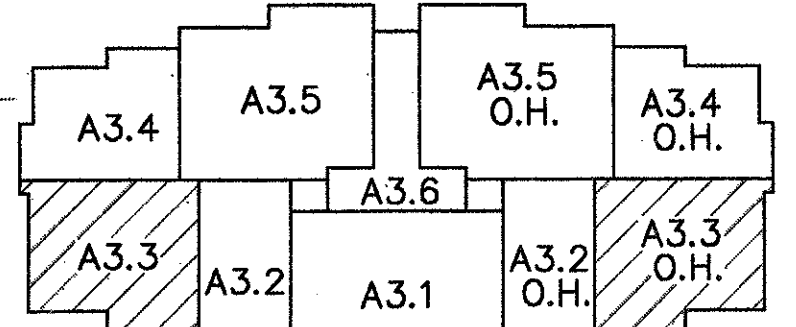
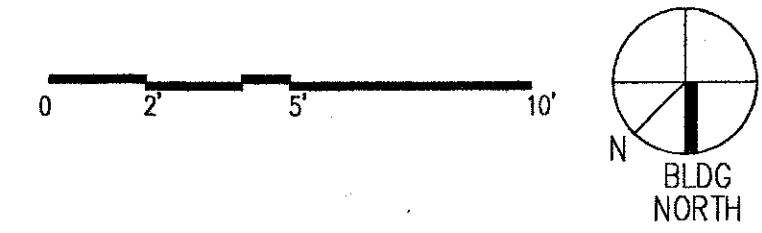


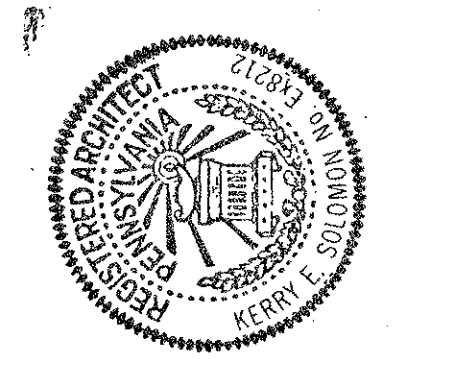
1 ENLARGED FLOOR PLAN—AUDITORIUM #2 & #3  
 1/4" = 1'-0" AUDITORIUM #12 & #13 O.H.



KEY PLAN  
 COPYRIGHT © 1999  
 KERRY E. SOLOMON ARCHT  
 ALL RIGHTS RESERVED

REVISIONS	BY
9-20-99	RCM

KERRY E. SOLOMON ARCHITECTS, INC.  
 624 ROCK SPRINGS ROAD  
 PITTSBURGH, PENNSYLVANIA 15228  
 (412) 563-7656 FAX (412) 563-0786



PROPOSED GINEMA COMPLEX  
 FOR  
 KLM THEATRE PARTNERS, L.P. D.B.A.  
**STAR CITY**  
 ROUTE 50 SOUTH FAYETTE, PA

DRAWN RCM
CHECKED KES
DATE 8-9-99
SCALE 1/4" = 1'-0"
JOB NO. 9929
SHEET
<b>A3.3</b>
OF SHEETS

NOTE: SEATING SHOWN IS A PROPOSED LAYOUT.  
 FINAL LAYOUT TO BE DETERMINED BY  
 SEATING SUPPLIER/MANUFACTURER.