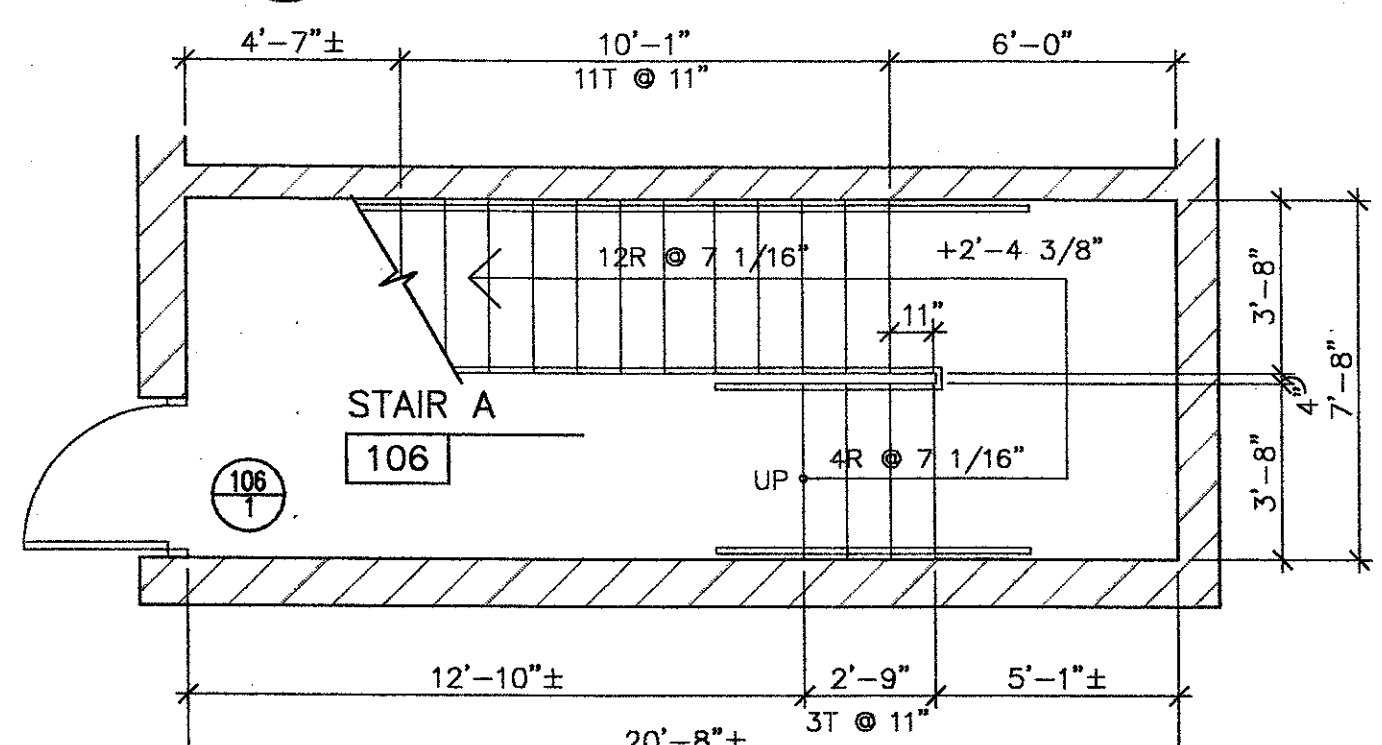
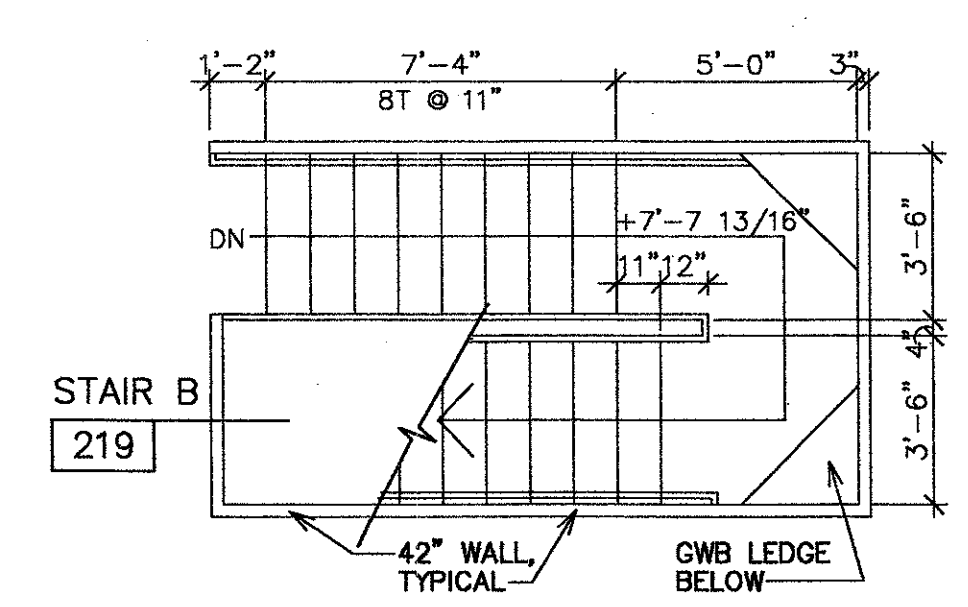


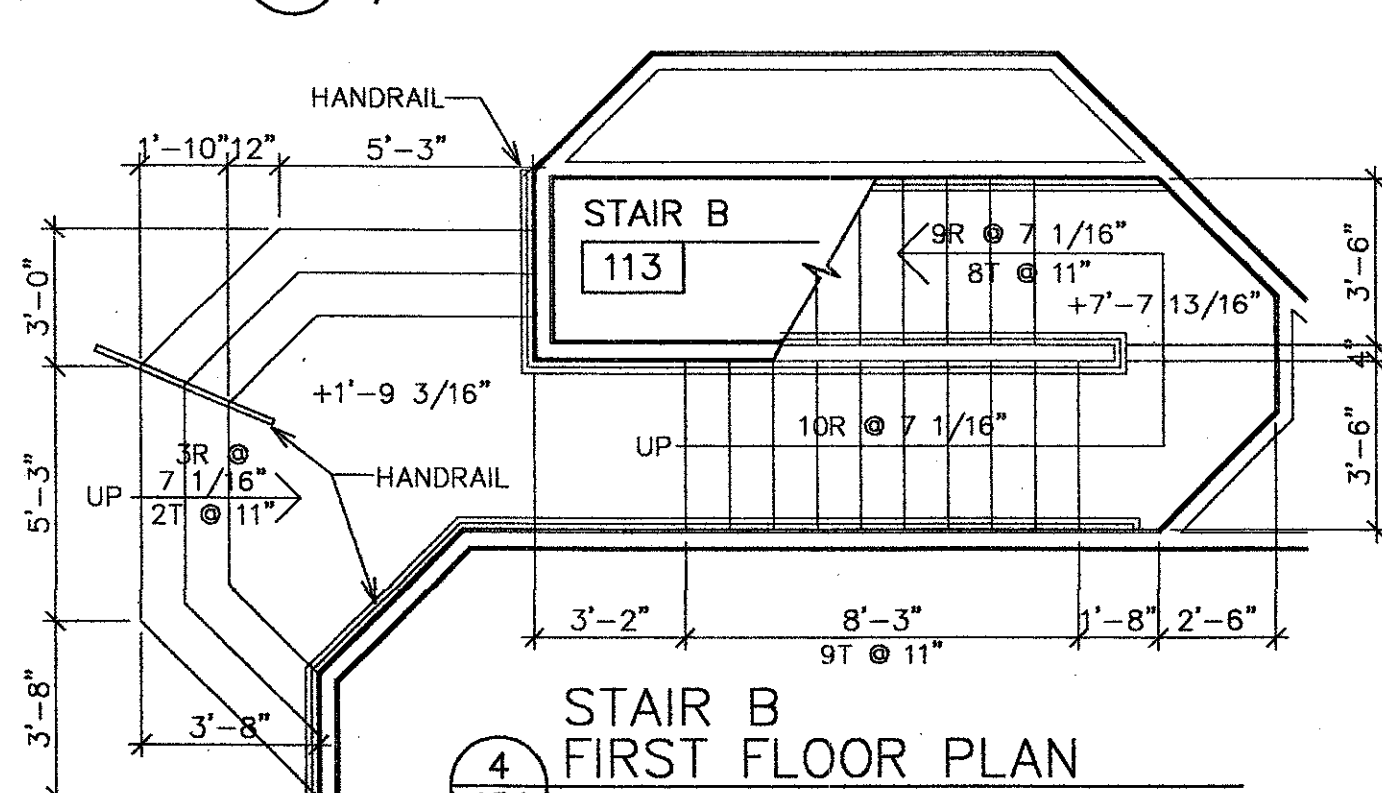
1  
A8.1  
1/4"=1'-0"



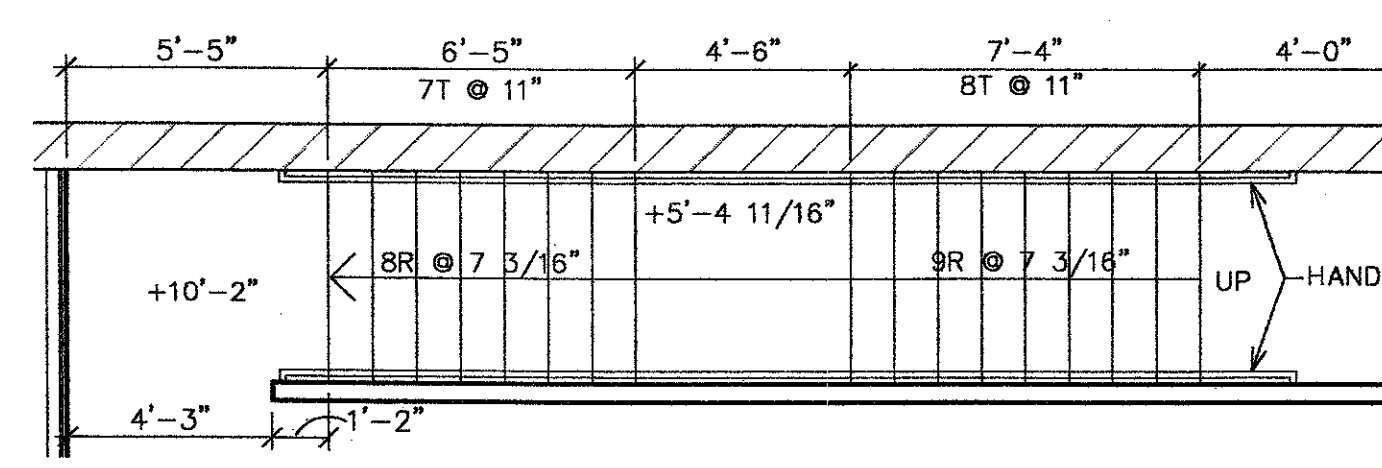
2  
A8.1  
1/4"=1'-0"



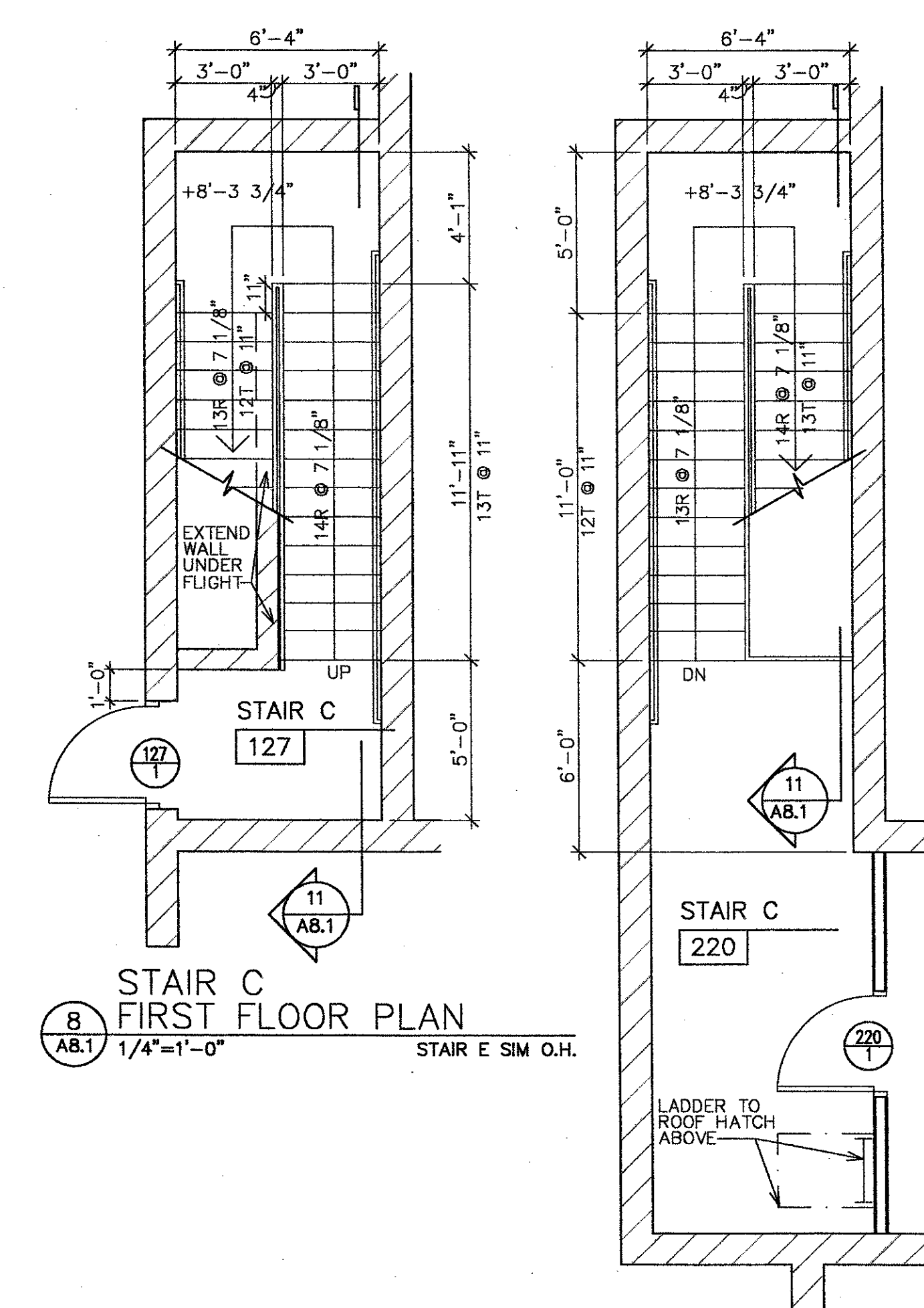
3  
A8.1  
1/4"=1'-0"



4  
A8.1  
1/4"=1'-0"



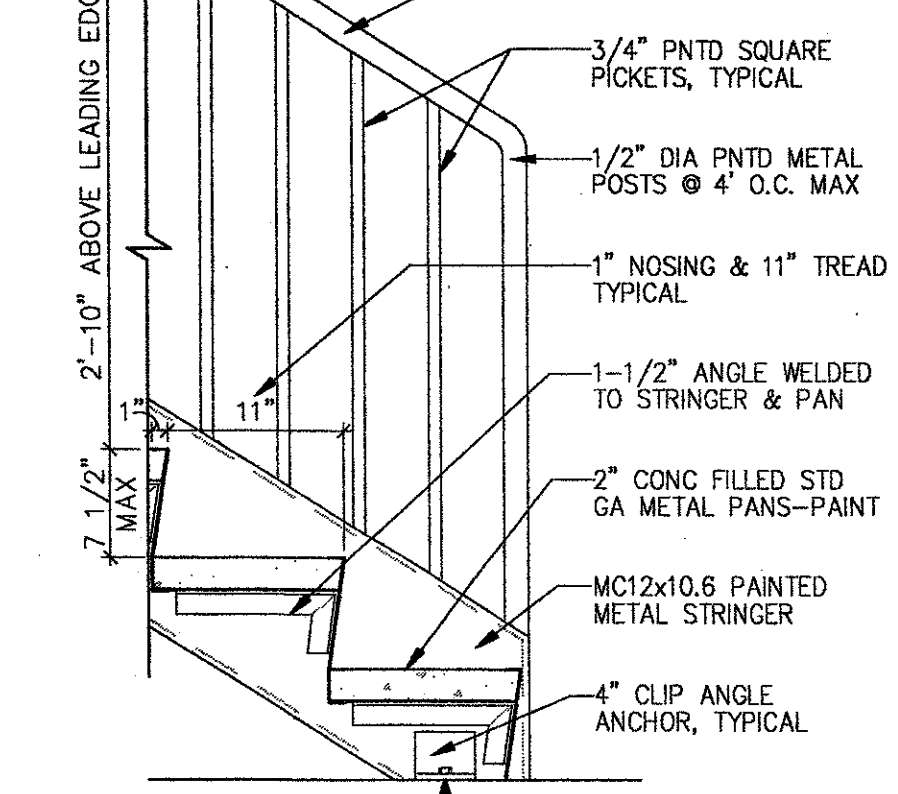
5  
A8.1  
1/4"=1'-0"



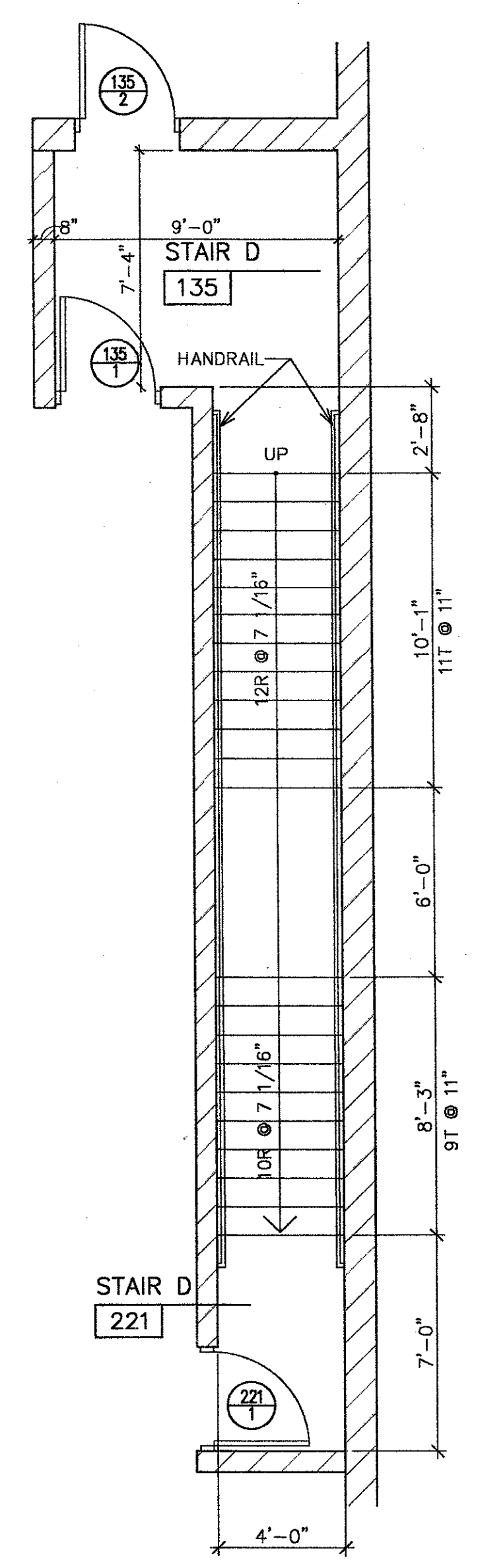
8  
A8.1  
1/4"=1'-0"



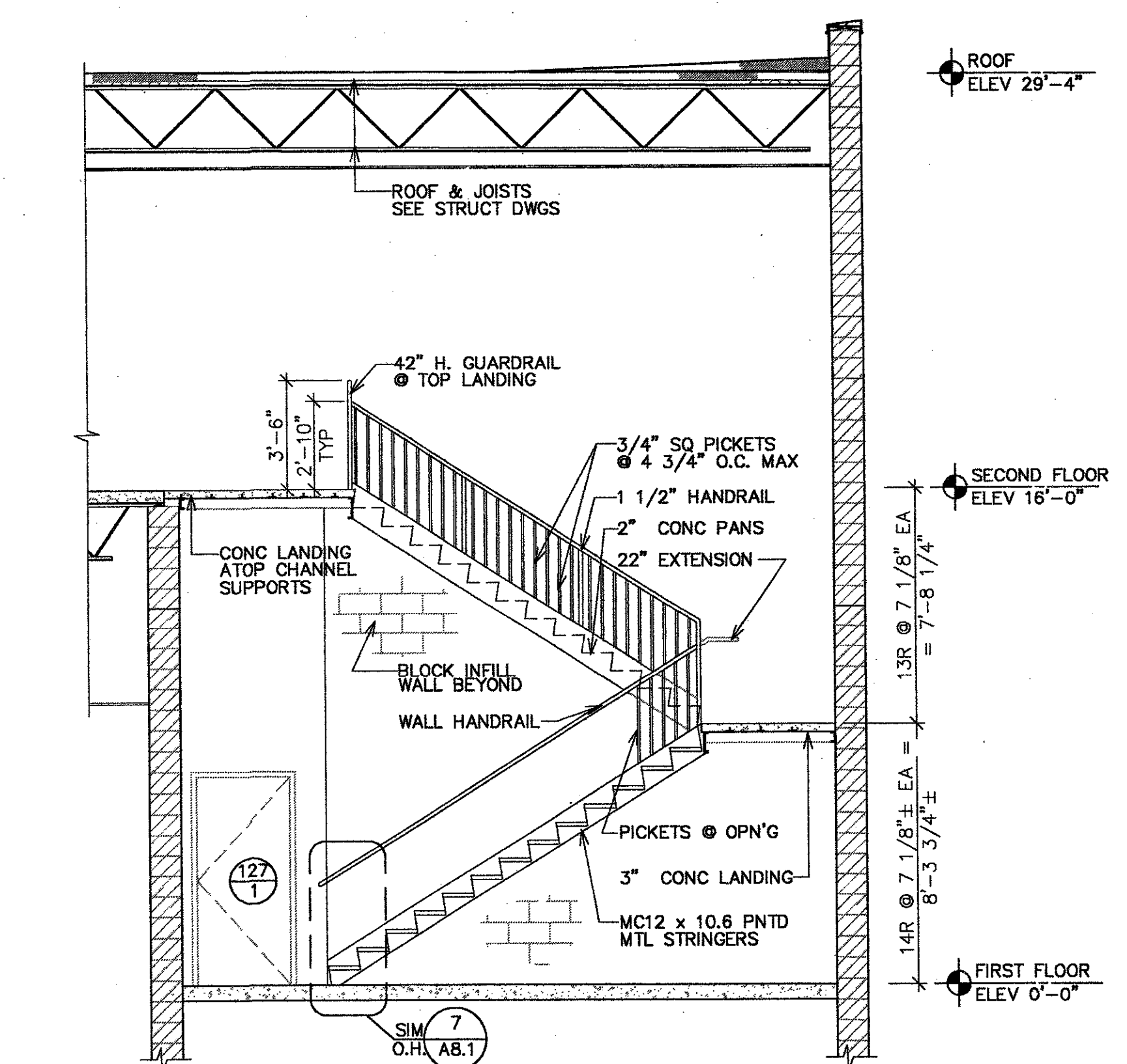
9  
A8.1  
1/4"=1'-0"



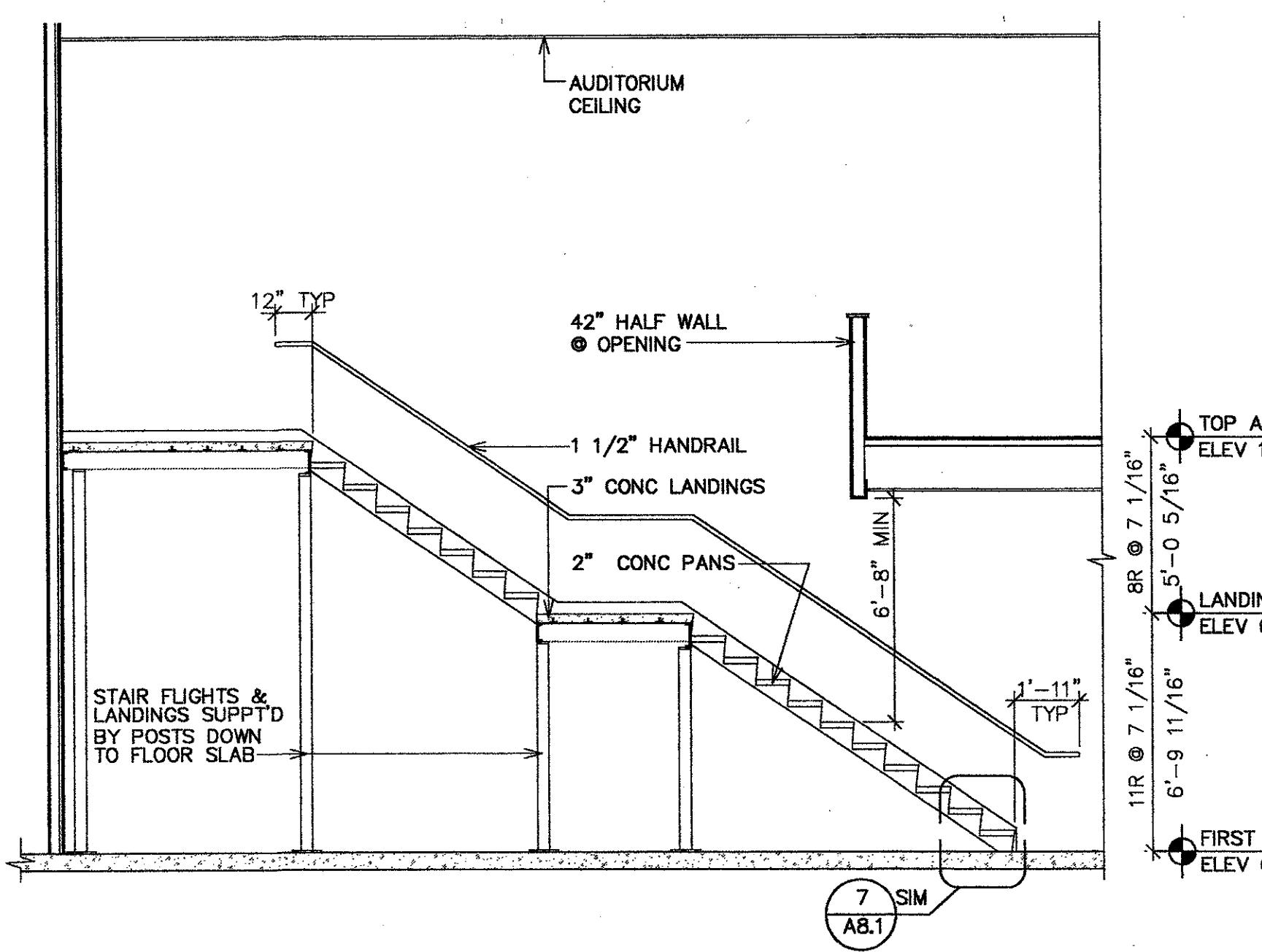
7  
A8.1  
1" = 1'-0"



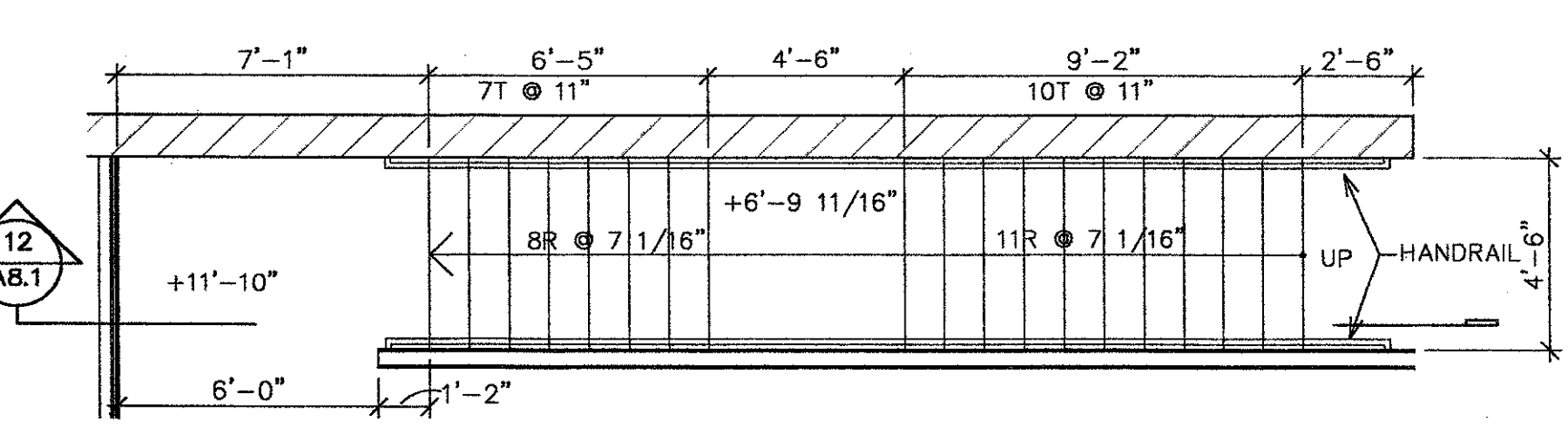
10  
A8.1  
1/4"=1'-0"



11  
A8.1  
1/4" = 1'-0"



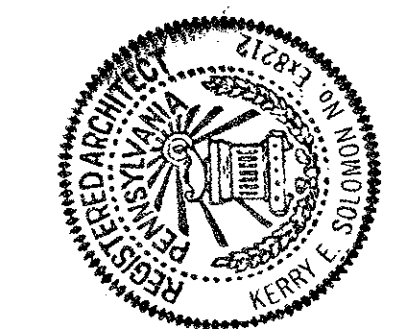
12  
A8.1  
1/4" = 1'-0"



6  
A8.1  
1/4"=1'-0"

| REVISIONS | BY |
|-----------|----|
|           |    |
|           |    |
|           |    |
|           |    |
|           |    |
|           |    |
|           |    |
|           |    |
|           |    |
|           |    |

KERRY E. SOLOMON ARCHITECTS, INC.  
624 ROCK SPRINGS ROAD  
PITTSBURGH, PENNSYLVANIA 15228  
(412) 563-7656 FAX (412) 563-0786



PROPOSED CINEMA COMPLEX  
FOR  
KLM THEATRE PARTNERS, L.P., D.B.A.  
**STAR CITY**  
ROUTE 50 SOUTH FAYETTE, PA

|         |          |
|---------|----------|
| DRAWN   | RCM      |
| CHECKED | KES      |
| DATE    | 9-20-99  |
| SCALE   | AS NOTED |
| JOB NO. | 9929     |
| SHEET   | A8.1     |