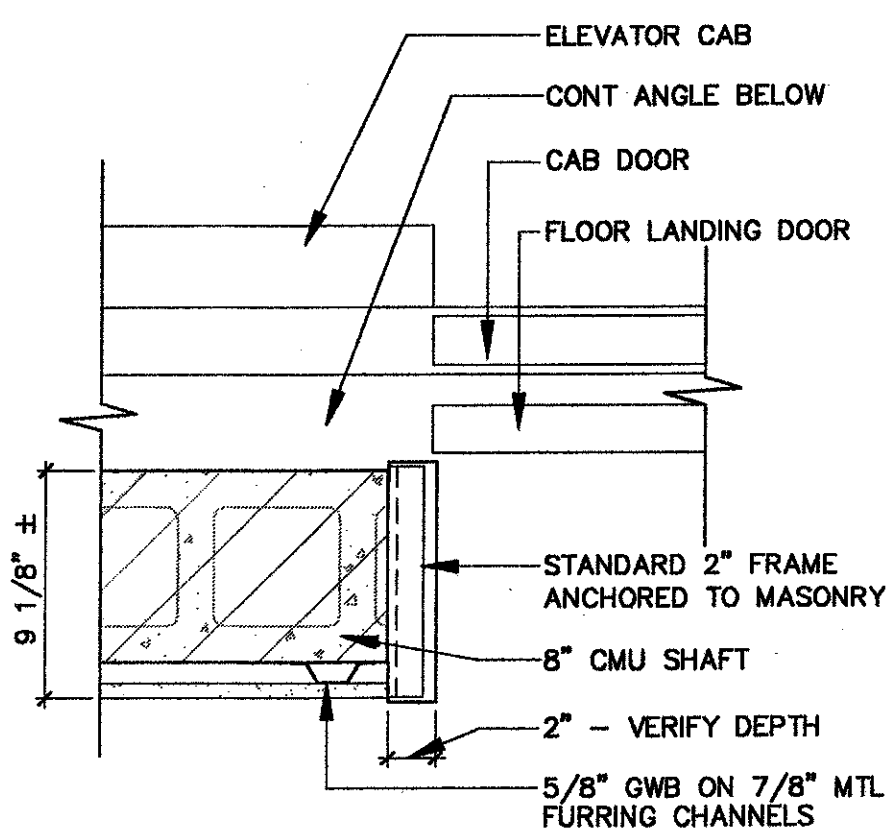
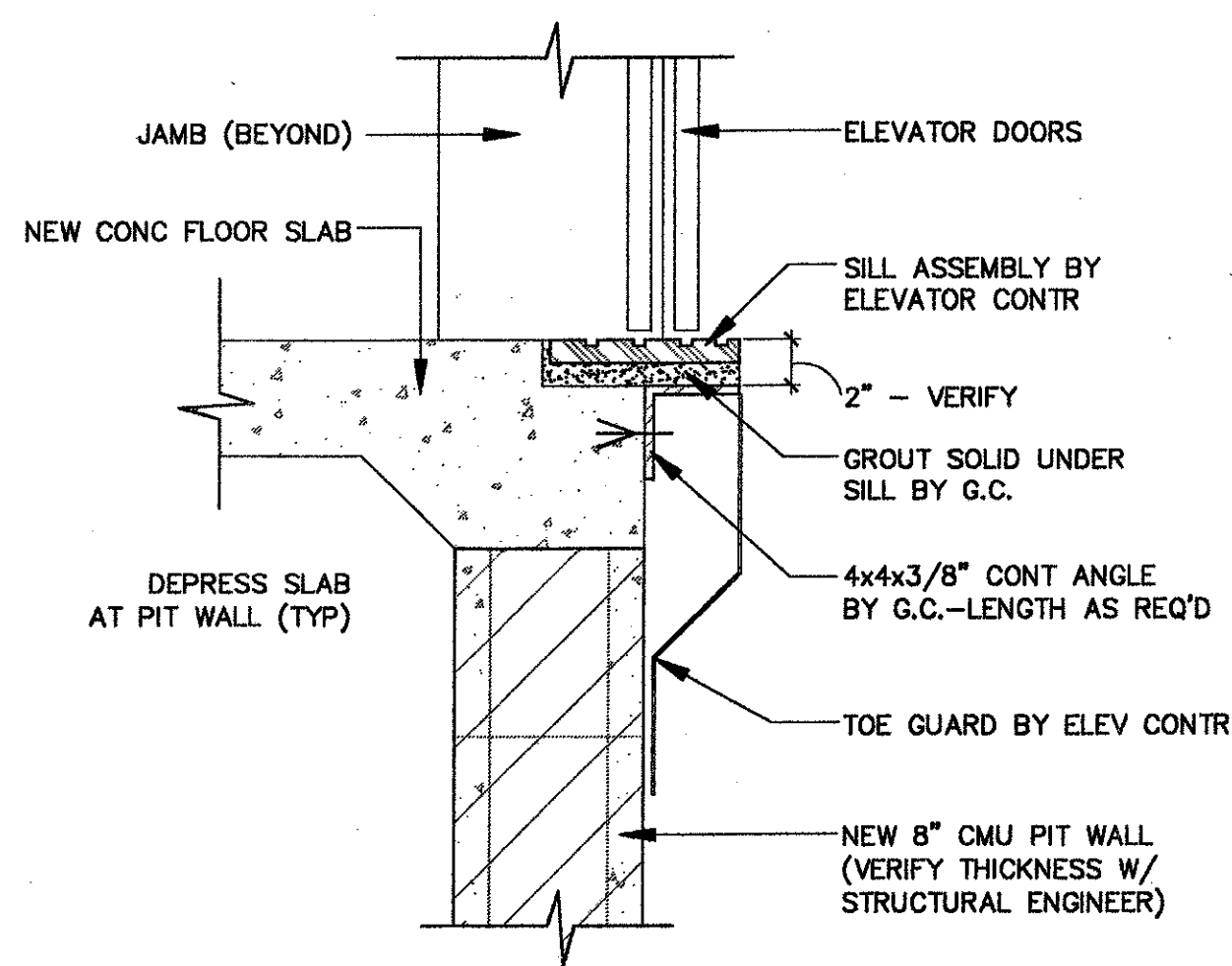


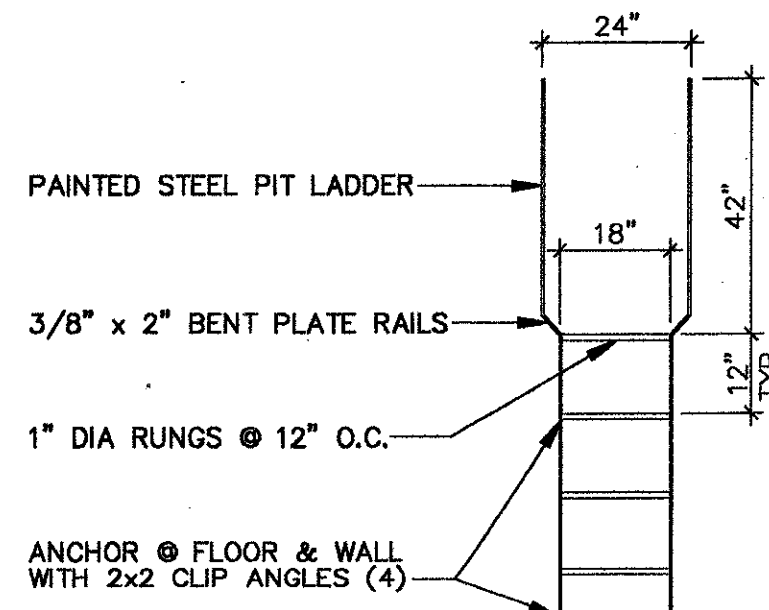
1 ELEVATOR SECTION
A8.2 3/8" = 1'-0"



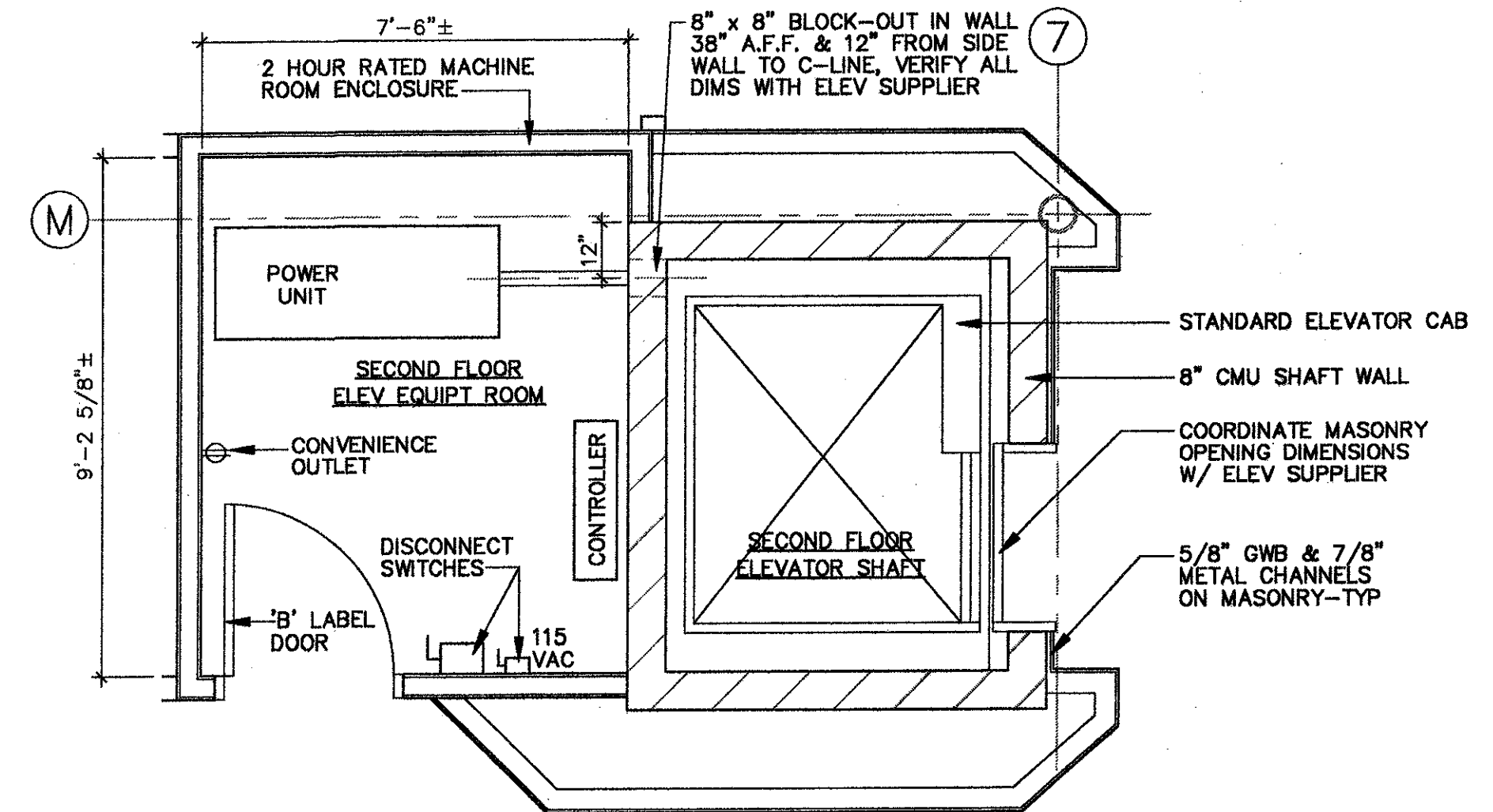
4 TYPICAL JAMB DETAIL
A8.2 1-1/2" = 1'-0"



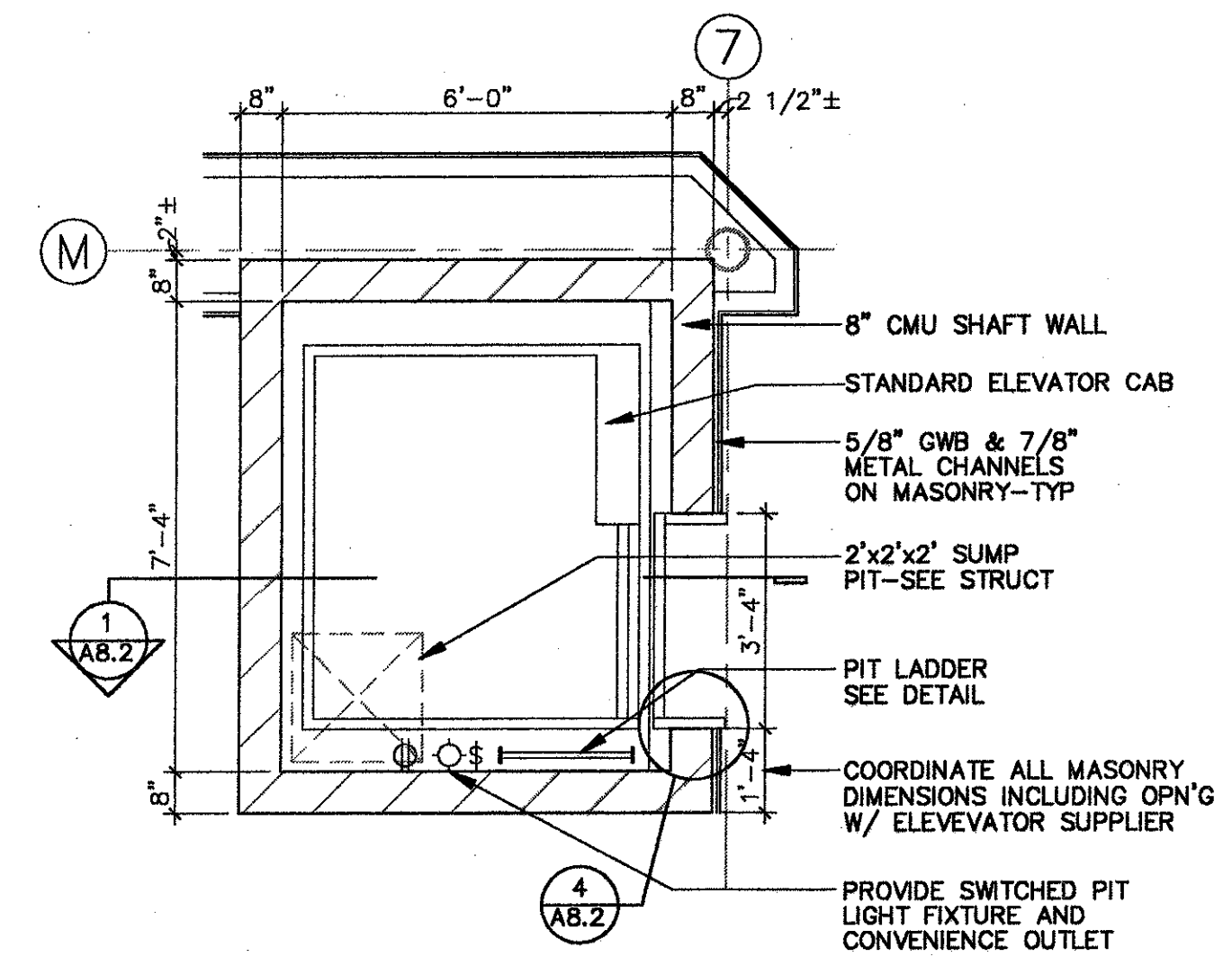
3 TYPICAL SILL DETAIL
A8.2 1-1/2" = 1'-0"



2 PIT LADDER DETAIL
A8.2 3/8" = 1'-0"



6 ELEV EQUIPT ROOM PLAN
A8.2 3/8" = 1'-0"



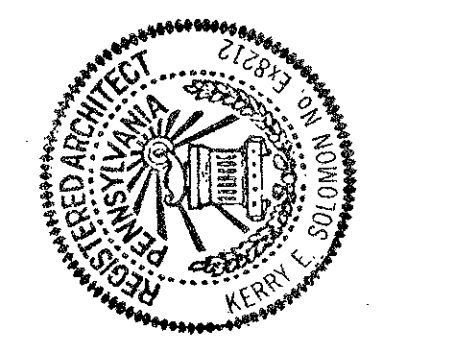
5 ENLARGED SHAFT PLAN
A8.2 3/8" = 1'-0"

GENERAL NOTES:

- ALL DIMENSIONS, DETAILS, SPECIFICATIONS ETC. ARE BASED UPON "ELEVATOR EQUIPMENT CORP." HYDRAULIC DUAL-JACK HOLELESS PASSENGER ELEVATOR "ADVANTAGE SERIES" 2500 LB, 100 FPM WITH SINGLE SLIDE DOORS.
- PROVIDE MID-RANGE MODEL CAB (TO BE SELECTED BY ARCHITECT FROM MANUFACTURER'S STANDARD SELECTIONS) INCLUDING BAKED ENAMEL DOORS & FRAMES, CARPET, PLASTIC LAMINATE WALL PANELS WITH STEEL HANDRAILS AND CEILING WITH LIGHTS.
- ELEVATORS THAT MEET ALL THE REQUIREMENTS NOTED ON THIS DRAWING FROM DOVER, OTIS, SCHINDLER ETC. ARE ACCEPTABLE BASED UPON REVIEW BY ARCHITECT AND ARCHITECT'S DESIGNATION AS "APPROVED EQUAL".
- ELECTRICAL CONTRACTOR MUST PROVIDE 3 PHASE POWER SUPPLY AND DISCONNECT TO ELEVATOR MACHINE FROM BUILDING POWER AS REQUIRED.
- FIRE PROTECTION CONTRACTOR MUST PROVIDE SPRINKLER HEADS INTO SHAFT & MACHINE ROOM AS REQUIRED BY CODE.
- CONSTRUCT SHAFT AND MACHINE ROOM WITH ADEQUATE HEATING, COOLING & VENTILATION TO MEET ALL BUILDING CODE REQUIREMENTS.
- ELEVATOR MUST MEET ALL REQUIREMENTS SET FORTH BY LOCAL, STATE & FEDERAL BUILDING CODES INCLUDING A.D.A. AS WELL AS REQUIREMENTS TO ACCOMMODATE STRETCHERS.

REVISIONS	BY

KERRY E. SOLOMON ARCHITECTS, INC.
624 ROCK SPRINGS ROAD
PITTSBURGH, PENNSYLVANIA 15228
(412) 563-7656 FAX (412) 563-0786



PROPOSED CINEMA COMPLEX FOR
KLM THEATRE PARTNERS, L.P. D.B.A.
STAR CITY
ROUTE 50 SOUTH FAYETTE, PA

DRAWN	RCM
CHECKED	KES
DATE	9-20-99
SCALE	AS NOTED
JOB NO.	9929
SHEET	
A8.2	
OF	SHEETS